

# ComfortStar®

## FLEX-MOUNT MULTI-ZONE SYSTEMS WITH INVERTER TECHNOLOGY



ALEGRIA

PLATINUM  SERIES

# 2016

## MULTI-ZONE PRODUCT CATALOG



# 2016 PRODUCT CATALOG

## FLEX-MOUNT MULTI-ZONE SYSTEMS

# ComfortStar®

### WHY COMFORTSTAR®?

**WITH OVER 50 YEARS OF COMBINED EXPERIENCE, COMFORTSTAR®** is recognized world-wide as a leader in providing products that are reliable, energy efficient, innovative and cost-effective.

**OUR RESEARCH AND DEVELOPMENT** team continues to develop products that adhere to the highest quality standards, while elevating the level of efficiency to protect our precious environment.

**OUR MANUFACTURING FACILITIES** maintain the highest quality and reliability standards with ISO9001 and ISO14001. All our products are AHRI and ETL certified. Across the world, we are committed to bringing daily comfort into every facet of your lives. Whether it is your home, your child's school, or your local grocery store, ComfortStar® is there to ensure a pleasant environment, regardless of the climate. **WE PROVIDE SOLUTIONS AT A GREAT VALUE.**

**ALEGRIA**  
PLATINUM SERIES



## TABLE OF CONTENTS:

PAGE **3**

FLEXIBLE  
MULTI-ZONE  
SYSTEMS

PAGE **5**

STANDARD  
FEATURES

PAGE **6**

STANDARD  
FEATURES  
EXPANDED

PAGE **7**

MULTI-SPLITS  
HEAT PUMP  
SYSTEMS

PAGE **11**

OUTDOOR  
UNITS

PAGE **12**

CPP  
HIGH WALL  
MOUNT

PAGE **13**

TPA  
FAN COIL

PAGE **14**

FPA  
FLOOR-  
CEILING

PAGE **15**

TPA  
CASSETTE  
TYPE

PAGE **16**

INDOOR  
UNITS  
COMBINATION  
TABLES

PAGE **17**

MIX &  
MATCH  
FLEXIBILITY

PAGE **18**

SPECS  
AT A  
GLANCE

# DUCTLESS FLEX-MOUNT MULTI-ZONE HEAT PUMP SYSTEMS

## FLEXIBLE MULTI-ZONE SYSTEMS

**MULTI-ZONE** - A single outdoor condensing unit can power up to 5 different indoor evaporators. There are more than 350+ possible combinations ranging from 9,000 BTU to 24,000 BTU in high-wall mounts and light commercial units which make it very flexible for contractors in the designing of the system.

## TAKE CONTROL OF YOUR ENVIRONMENT...

**MULTI-ZONE SYSTEMS** allow for a flexible solution to individual zone comfort. Connecting up to 5 indoor units to a single outdoor unit reduces installation space, labor and costs while maximizing comfort and energy efficiency.



**INVERTER**



## IMPORTANT CHARACTERISTICS:

- **NO DUCT WORK REQUIRED:** Helps to save space, eliminates heat loss and easier installation.
- **ZONE CONTROL:** Maximize energy efficiency by individually cooling or heating only those spaces desired.
- **INVERTER, NO COMPRESSOR/ MOTOR HARD STARTS:** Increases efficiency, and extends the life of mechanical components. Thermal loads are reached quickly and sustained using minimal energy consumption.
- **FLEXIBILITY** - Suitable for residential and light commercial application.
- **VERY QUIET** - Low decibel levels for indoor/outdoor units.

# FLEX-MOUNT MULTI-ZONE SYSTEMS:

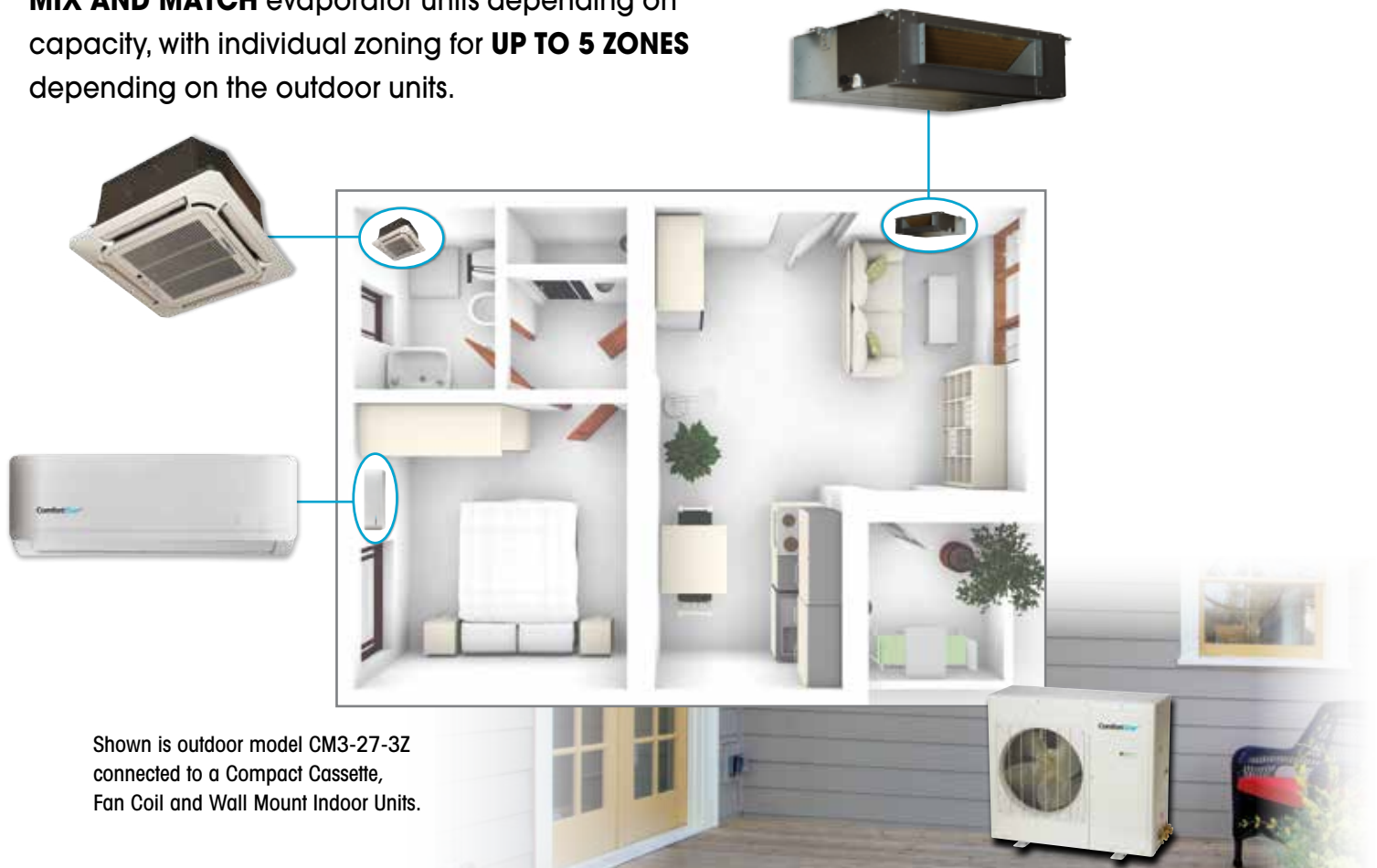
## HEAT OR COOL MULTIPLE LIVING SPACES INDEPENDENTLY WITH ONLY 1 OUTDOOR UNIT

- Flexible design - allows for **up to 5 indoor units**.
- Choose from 4 different indoor evaporators - high-wall mount, cassette type, fan coil and floor ceiling.
- Simple installation.
- All indoor units can be controlled individually.
- Connect 2 to 5 indoor units depending on capacity.
- Capacity up to 54,000 BTU!
- More than 350+ possible combinations.
- Energy Efficient - **up to 22 SEER**.

**NEW LOW AMBIENT KIT ALLOWS FOR HEATING IN AMBIENT TEMPERATURE AS LOW AS -13°F**

## YEAR-ROUND, WHOLE HOME OR BUSINESS COMFORT

**MIX AND MATCH** evaporator units depending on capacity, with individual zoning for **UP TO 5 ZONES** depending on the outdoor units.



Shown is outdoor model CM3-27-3Z connected to a Compact Cassette, Fan Coil and Wall Mount Indoor Units.

# STANDARD FEATURES:

- **LOW AMBIENT:** Systems are capable of producing comfort heating to ambient outdoor temperatures as low as **-13°F**.
- **WIFI:** (optional) Control your indoor unit using your smart phone mobile device.
- **MANUAL SWITCH:** Power unit ON/OFF using manual switch button located at the evaporator.
- **CENTRALIZED CONTROL:** Control up to 64 units using one wired central control. Front Desk Control (hotel application) overrides remote control at the evaporator.
- **INTERACTIVE DISPLAY:**
  - Display shows error codes based on system failure.
  - Display shows service codes if you have dirty filters.
  - Display will show error code if leak in the system is detected.
  - Display also alerts when unit goes into auto defrost.
- **BYPASS MODE:** Unit will continue to operate if a non-critical component fails, such as a sensor.
- **SELF-DIAGNOSIS:** unit will shut down and go into protection if it detects abnormalities. The display will show an error code depending on the type of protection the unit is in.
- **2-WAY DRAINING:** Option to place drain hose on left or right hand side of evaporator makes for flexible installation design.
- **3 DIRECTIONAL AIRFLOW:** Air flow is directed so that it reaches more surface area including the corners of the room being conditioned.
- **REFRIGERANT LEAK DETECTION ERROR CODE:** Error code is displayed at the indoor unit if there is a leak detected in the system.
- **MUTE OPERATION:** Silence beep from remote control.
- **FOLLOW ME FUNCTION:** Remote control has a sensor built in. In this mode, the unit will take the temperature at the remote control instead of at the evaporator for the set temperature.



**ALEGRIA**  
**PLATINUM**  **SERIES**

**INVERTER**



# DUCTLESS FLEX-MOUNT MULTI-ZONE HEAT PUMP SYSTEMS WITH INVERTER TECHNOLOGY

## STANDARD FEATURES:

- WIFI Compatible (optional)
- Bypass Mode
- Low Ambient (-13°F)
- Interactive Display
- Self-Diagnosis
- 350+ Possible Combinations
- Connect up to 5 zones
- Individual Zone Control
- High Efficiency Inverter Technology
- Mix & Match 4 Different Indoor Units. **Available Indoor Units: High Wall Mount, Cassette, Floor Ceiling and Fan Coil.**

## OUTDOOR MODELS



**DUAL ZONE  
CM2-18-2Z**



**TRI ZONE  
CM3-27-3Z**



**QUAD ZONE  
CM4-48-4Z**



**FIVE ZONE  
CM5-54-5Z**



# ALEGRIA PLATINUM SERIES DUAL, TRI, QUAD AND (5) ZONE HEAT PUMP SYSTEMS

**MORE THAN 350+ COMBINATIONS AVAILABLE**

**FOUR DIFFERENT INDOOR UNITS TO CHOOSE FROM!**

**CONNECT UP TO FIVE ZONES WITH CAPACITY UP TO 54,000 BTU/h**

## DUAL ZONE COMBINATION



**2** DUAL ZONE

**CM2-18-2Z  
DUAL ZONE**

Mix & Match for  
9,000 - 12,000 BTU/h  
Heat Pump Inverter

**INVERTER**

**MORE THAN 350+ COMBINATIONS AVAILABLE**

**FOUR DIFFERENT INDOOR UNITS TO CHOOSE FROM!**

**CONNECT UP TO FIVE ZONES WITH CAPACITY UP TO 54,000 BTU/h**

# TRI ZONE COMBINATION



**3** TRI ZONE



**CM3-24-3Z**

**TRI ZONE**

Mix & Match for

9,000 - 18,000 BTU/h

Heat Pump Inverter

**INVERTER**



**MORE THAN 350+ COMBINATIONS AVAILABLE**

**FOUR DIFFERENT INDOOR UNITS TO CHOOSE FROM!**

**CONNECT UP TO FIVE ZONES WITH CAPACITY UP TO 54,000 BTU/h**

# QUAD ZONE COMBINATION

**4** QUAD ZONE



**CM4-48-4Z**  
**QUAD ZONE**  
Mix & Match for  
9,000 - 18,000 BTU/h  
Heat Pump Inverter

**INVERTER**

# (5) ZONE COMBINATION



5 ZONE



**CM5-54-5Z FIVE ZONE**  
Mix & Match for 9,000 - 18,000  
BTU/h Heat Pump Inverter

**INVERTER**

# FLEX-MOUNT MULTI-ZONE HEAT PUMP OUTDOOR UNITS 18,000 - 54,000 BTU/h

## FEATURES:

- Inverter Technology
- Factory Pre-Charge (25 ft.)
- Slow Ambient Operation to -13°F
- Connect Up To 5 Zones
- Self-Diagnostics
- Mix and Match With Light Commercial Indoor Units And High-Wall Mounts

**INVERTER**



OUTDOOR MODEL			CM2-18-2Z	CM3-24-3Z	CM4-48-4Z	CM5-54-5Z	
Indoor (High-wall mounted)			CPP009-018CD (I)	CPP009-018CD (I)	CPP009-018CD (I)	CPP009-024D (I)	
Light Commercial Indoor - Fan Coil, Cassette, Floor Ceiling			9k - 18k BTU	9k - 18k BTU	9k - 18k BTU	9k - 24k BTU	
Power supply		Ph-V-Hz	208-230V~60Hz , 1Ph	208-230V~60Hz , 1Ph	208-230V~60Hz , 1Ph	208-230V~60Hz , 1Ph	
Cooling	Capacity	Btu/h	18000	27000	36000	48000	
	<b>EER</b>		<b>12</b>	<b>11</b>	<b>8</b>	<b>9.5</b>	
	<b>SEER</b>		<b>22</b>	<b>19.5</b>	<b>17</b>	<b>19</b>	
Heating	Capacity	Btu/h	19000	31000	38000	51000	
	HSPF		9.5	9.5	9.5	8.2	
Indoor unit	Dimension (W*D*H)	inch	31.6 x 11.7 x 7.5	31.6 x 11.7 x 7.5	31.6 x 11.7 x 7.5	31.6 x 11.7 x 7.5	
	Packing (W*D*H)	inch	34.5 x 11.2 x 14.8	34.5 x 11.2 x 14.8	34.5 x 11.2 x 14.8	34.5 x 11.2 x 14.8	
Outdoor unit	Dimension (W*D*H)	inch	36 x 37.4 x 23.9	37.3 x 16.2 x 31.9	37.3 x 16.2 x 31.9	37.4 x 16.1 x 52.5	
	Packing (W*D*H)	inch	38 x 40 x 29.8	42.9 x 19.7 x 34.1	42.9 x 19.7 x 34.1	43.11 x 19.5 x 59.3	
Refrigerant precharge		ft	25*2	25*3	25*4	25*5	
Additional charge for each ft		oz/ft	0.161	0.161	0.161	0.161	
Design pressure		PSIG	550/340 PSIG	550/340 PSIG	550/340 PSIG	550/340 PSIG	
Refrigerant piping	Liquid side/ Gas side	inch	2 X 1/4"/3/8"	3 X (1/4"/3/8")	4x1/4" 3x3/8" 1x1/2"	5x1/4" 3x3/8" 2x1/2"	
	Max. length for all rooms	ft	98	148	197	246	
	Max. length for one indoor unit	ft	66	82	98	98	
	Max. height diff. between indoor and outdoor unit	OU higher than IU	ft	33	33	33	33
		OU lower than IU	ft	49	49	49	49
	Max. height difference between indoor units		ft	33	33	33	33
Connection wiring			14AWG*4 Stranded, unshielded	12AWG*4 Stranded, unshielded	10AWG*4 Stranded, unshielded	10AWG*4 Stranded, unshielded	
Control Type			Remote Control	Remote Control	Remote Control	Remote Control	

# CPP - HIGH WALL MOUNT



## STANDARD FEATURES:

- Compact Design
- 24-Hour Timer
- Auto Restart
- Sleep Mode
- LED Display
- Wired Remote (sold separately)
- Self-Diagnostics
- Mix and Match with Other Light Commercial or High-Wall Mounted indoor Units
- Self-Diagnostics

## CONTROL OPTIONS:

### STANDARD OPTIONS:

#### WIRELESS REMOTE CONTROL -

Comes standard with all units.

**MANUAL SWITCH** - Manually turn unit ON/OFF using button.

**OPTIONAL**

### OPTIONAL:

#### WIRED CONTROL -

Wired control is optional and works similar to a thermostat.



**CENTRAL CONTROL** – One central control can control up to 64 units.

**FRONT DESK** – overrides individual controls and all settings are manipulated using central control.

INDOOR UNIT			CPP009CD (I)	CPP012CD (I)	CPP018CD (I)	CPP024CD (I)
Power supply	Ph-V-Hz		208-230V~60Hz , 1Ph	208-230V~60Hz , 1Ph	208-230V~60Hz , 1Ph	208-230V~60Hz , 1Ph
Capacity	Cooling	BTU/h	9000	12000	18000	24000
	Heating	BTU/h	9800	12000	18000	25000
Indoor fan motor	Input	W	20	20	58	120
	RLA	A	0.25	0.25	0.4	0.45
Indoor air flow (Hi/Medi/Lo)	CFM		265/205/141	306/211/147	560/365/306	618/470/324
Indoor noise level (Hi/Med/Lo)	dB(A)		39/-/24.5	39/-/25	45.5/-/34.5	50/-/35.5
Indoor unit	Dimension (W*D*H)	inch	31.57x7.44x11.69	31.57x7.44x11.69	42.52x8.90x13.19	42.52x8.90x13.19
	Packing (W*D*H)	inch	34.45x11.22x14.76	34.45x11.22x14.76	45.47x16.34x12.40	45.47x16.34x12.40
	Net/Gross weight	lbs.	18.1/22.0	18.1/22.0	29.1/37.0	29.1/37.0
Refrigerant piping	Liquid side/ Gas side	inch	1/4"/3/8"	1/4"/1/2"	1/4"/1/2"	3/8"/5/8"
	Max. refrigerant pipe length	ft	82	82	98	164
	Max. difference in level	ft	33	33	66	82
Connection wiring			16AWG*4 Stranded,	16AWG*4 Stranded,	16AWG*4 Stranded,	16AWG*4 Stranded,
Control Type			Remote Control	Remote Control	Remote Control	Remote Control
Indoor(cooling/ heating)	°F		62-90/32-86	62-90/32-86	62-90/32-86	62-90/32-86



# TPA - FAN COIL - 9,000 - 24,000 BTU/h



### STANDARD FEATURES:

- Compact Design
- Quiet Operation
- 360 Air Discharge
- Wireless Remote Control (standard)
- Wired Wall Remote (optional)
- Reserved Hole for Fresh Air Intake
- Optional Condensate Pump
- Mix and Match with Other Light Commercial or High-Wall Mounted indoor Units

### CONTROL OPTIONS:

#### STANDARD OPTIONS:

#### WIRELESS REMOTE CONTROL -

Comes standard with all units.

**MANUAL SWITCH** - Manually turn unit ON/OFF using button.

#### OPTIONAL:

**WIRED CONTROL** - Wired control is optional and works similar to a thermostat.

OPTIONAL



**CENTRAL CONTROL** - One central control can control up to 64 units.

**FRONT DESK** - overrides individual controls and all settings are manipulated using central control.

INDOOR MODEL			CPA-09	CPA-12	CPA-18	CPA-24
Power supply	V-ph-Hz		208-230~1-60	208-230~1-60	208-230~1-60	208-230~1-60
Cooling	Capacity	Btu/h	9,000.00	11,000.00	16,000.00	23,000.00
	<b>EER</b>		<b>13.50</b>	<b>12.5</b>	<b>12.5</b>	<b>12.50</b>
	<b>SEER</b>		<b>19.00</b>	<b>18.00</b>	<b>18.50</b>	<b>19.00</b>
Heating	Capacity	Btu/h	10,000.00	12000	18000	24,400.00
	HSPF		10.00	10	9.6	10.50
Minimum circuit ampacity	A		1.20	1.3	1.9	2.50
Max.fuse	A		15.00	15.00	15	15.00
Indoor fan motor	Qty		1.00	1.00	1.00	1.00
	Input	W	55.00	55.00	90.00	90.00
	RLA	A	0.90	1.00	1.50	2.00
	Speed	r/min	1150/1000/900	1150/1000/900	1050/880/800	1030/880/800
Indoor air flow (Hi/Med/Lo) (No duct)	CFM		330	360	582	861
Indoor noise level (Hi/Med/Lo)	dB(A)		37/34/31	39/36/32	35/33/31	50/47/45
Indoor Unit	Dimension (WxDxH)	inch	27.56x25x8.27	27.56x25x8.27	36.22x25x8.27	36.22x25x10.63
	Packing (WxDxH)	inch	36.02x25.79x11.42	36.02x25.79x11.42	44.68x25.79x11.42	44.68x25.79x13.78
	Net/Gross weight	lbs.	39.90/50.27	39.90/50.27	50.7/63.93	57.32/68.34
Design pressure	PSIG		550/340 PSIG	550/340 PSIG	550/340 PSIG	550/340 PSIG
Drainage water pipe diameter	inch		3/4"	3/4"	3/4"	3/4"
Refrigerant piping	Liquid side/Gas side	inch	1/4"/3/8"	1/4"/1/2"	1/4"/1/2"	3/8"/5/8"
Control Type			Wired control	Wired control	Wired control	Wired control
Room temperature	Cooling	°F	62-90	62-90	62-90	62-90
	Heating	°F	32-86	32-86	32-86	32-86
Operating Temperature	°F		62-86	62-86	62-86	62-86





# FPA - FLOOR CEILING - 18,000 - 24,000 BTU/h



### STANDARD FEATURES:

- Flexible Design – Horizontal or Vertical installation
- Compact Design
- Quiet Operation
- Adjustable 3-Speed Fan Motor
- Louver Swing Function to Disperse Air Flow
- Wireless Remote Control (standard)
- Wired Wall Remote (optional)
- Mix and Match with Other Light Commercial or High-Wall Mounted indoor Units

### CONTROL OPTIONS:

#### STANDARD OPTIONS:

**WIRELESS REMOTE CONTROL** - Comes standard with all units.

**MANUAL SWITCH** - Manually turn unit ON/OFF using button.

#### OPTIONAL:

**WIRED CONTROL** - Wired control is optional and works similar to a thermostat.

OPTIONAL



**CENTRAL CONTROL** – One central control can control up to 64 units.

**FRONT DESK** – overrides individual controls and all settings are manipulated using central control.

INDOOR MODEL			FPA-18	FPA-24
Power supply		V-ph-Hz	208-230~1-60	208~230-1-60
Cooling	Capacity	Btu/h	12000	23000
	EER		14	10.0
	SEER		22	19
Heating	Capacity	Btu/h	12000	25000
	HSPF		10.5	10.5
Minimum circuit ampacity		A	1.3	2.5
Max.fuse		A	15	15
Indoor fan motor	Qty		1	1
	Input	W	55	55
	RLA	A	1	2
	Speed (Hi/Med/Lo)	r/min	1000/800/700	1350/1260/1120
Indoor air flow (Hi/Med/Lo)		CFM	334	880/770/650
Indoor noise level (sound pressure) (Hi/Med/Lo)		dB(A)	44/38/33	53/49/45
Indoor Unit	Dimension (WxDxH)	inch	38.98x25.98x7.99	42.05x26.57x9.25
	Packing (WxDxH)	inch	42.91x29.33x11.69	45.08x29.72x12.32
	Net/Gross weight	lbs.	46.96/60.4	55.12/66.14
Design pressure		PSIG	550/340 PSIG	550/340 PSIG
Drainage water pipe diameter		inch	3/4"	1"
Refrigerant piping	Liquid side/Gas side	inch	1/4"/1/2"	3/8"/5/8"
Control Type			Remote control	Remote control
Room temperature	Cooling	°F	62-90	62-90
	Heating	°F	32-86	32-86
Operating Temperature		°F	62-86	62-86



# TPA - CASSETTE TYPE - 9,000 - 24,000 BTU/h



### STANDARD FEATURES:

- Compact Design
- Concealed Ceiling Unit
- Quiet Operation
- 360 Air Discharge
- Wireless Remote Control (standard)
- Wired Wall Remote (optional)
- Reserved Hole for Fresh Air Intake
- Integrated Condensate Pump (29 ft. head)
- Mix and Match with Other Light Commercial or High-Wall Mounted indoor Units

### CONTROL OPTIONS:

#### STANDARD OPTIONS:

**WIRELESS REMOTE CONTROL** - Comes standard with all units.

**MANUAL SWITCH** - Manually turn unit ON/OFF using button.

#### OPTIONAL:

**WIRED CONTROL** - Wired control is optional and works similar to a thermostat.

**CENTRAL CONTROL** - One central control can control up to 64 units.

**FRONT DESK** - overrides individual controls and all settings are manipulated using central control.

OPTIONAL



INDOOR MODEL			TPA-09	TPA-12	TPA-18	TPA-24
Power supply	V-ph-Hz		208-230~1-60	208-230~1-60	208-230~1-60	208-230V~ 60Hz, 1Ph
Cooling	Capacity	Btu/h	9000	12000	16000	23000
	<b>EER</b>		<b>13.0</b>	<b>13.0</b>	<b>12.5</b>	<b>10.3</b>
	<b>SEER</b>		<b>19</b>	<b>20.5</b>	<b>19</b>	<b>17.5</b>
Heating	Capacity	Btu/h	10000	12000	18000	24400
	HSPF		10.0	10.0	9	10.5
Minimum circuit ampacity	A		1.2	1.3	1.9	2.5
Max.fuse	A		15	15	15	15
Indoor Fan motor	Qty		1	1	1	1
	Input	W	46	46	46	42
	RLA	A	0.9	1.0	1.5	2
	Speed(Hi)	r/min	600/520/460	680/580/500	730/630/570	600/520/450
Indoor air flow (Hi)	CFM		353	338	563	820/740/590
Indoor noise level (sound pressure) (Hi/Med/Lo)	dB(A)		41/39/37	41/38/35	46/43/41	51/47/43
Indoor unit	Dimension (WxDxH) (body)	inch	22.44x22.44x10.24	22.44x22.44x10.24	22.44x22.44x10.24	33.07x33.07x8.07
	Dimension (WxDxH) (panel)	inch	25.47x25.47x1.97	25.47x25.47x1.97	25.47x25.47x1.97	37.4x37.4x2.17
	Net/Gross weight (body)	lbs.	35.27/41.88	35.27/41.88	39.68/46.3	45.19/52.91
	Net/Gross weight (panel)	lbs.	5.51/9.92	5.51/9.92	5.51/9.92	11.02/17.64
Design pressure	PSIG		540/300 PSIG	540/300 PSIG	550/340 PSIG	550/340 PSIG
Drainage water pipe diameter	inch		3/4"	3/4"	3/4"	1"
Refrigerant piping	Liquid side/Gas side	inch	1/4"/3/8"	1/4"/1/2"	1/4"/1/2"	3/8"/5/8"
Control Type			Remote control	Remote control	Remote control	Remote control
Room temperature	Cooling	°F	62-90	62-90	62-90	62-90
	Heating	°F	32-86	32-86	32-86	32-86
Operating Temperature	°F		62-86	62-86	62-86	62-86



# MULTI-ZONE COMBINATIONS

## 2 ZONE CONDENSER, CM2-18-2Z

ONE UNIT	TWO UNIT
9	9+9
12	9+12
	12+12

2 ZONE



## 3 ZONE CONDENSER, CM3-27-3Z

ONE UNIT	TWO UNIT	THREE UNIT
9	9+9 12+12	9+9+9 9+12+12
12	9+12 12+18	9+9+12 12+12+12
18	9+18 18+18	9+9+18

3 ZONE

## 4 ZONE CONDENSER, CM4-48-4Z

ONE UNIT	TWO UNIT	THREE UNIT	FOUR UNIT
9	9+9 12+12	9+9+9 9+12+12 12+12+12	9+9+9+9 9+9+12+18
12	9+12 12+18	9+9+12 9+12+18 12+12+18	9+9+9+12 9+12+12+12
18	9+18 12+24	9+9+18 9+12+24 12+12+24	9+9+9+18 9+12+12+18
24	9+24 18+18	9+9+24 9+18+18 12+18+18	9+9+12+12 12+12+12+12

4 ZONE

## 5 ZONE CONDENSER, CM5-54-5Z

ONE UNIT	TWO UNIT	THREE UNIT
	9+9 12+18	9+9+9 9+12+18 9+18+18
9	9+12 12+24	9+9+12 9+12+24 12+12+12
12	9+18 18+18	9+9+18 12+12+18 9+18+24
18	9+24 18+24	9+9+24 12+12+24 12+12+24
24	12+12 24+24	9+12+12 12+18+18 18+18+18

5 ZONE

## 5 ZONE CONDENSER, CM5-54-5Z

FOUR UNIT	FIVE UNIT
9+9+9+9 9+9+12+18 12+12+12+12	9+9+9+9+9 9+9+9+12+18
9+9+9+12 9+9+12+24 12+12+12+18	9+9+9+9+12 9+9+12+12+12
9+9+9+18 9+12+12+12 12+12+12+24	9+9+9+9+18 9+9+12+12+18
9+9+9+24 9+12+12+18 9+9+18+18	9+9+9+9+24 9+12+12+12+12
9+9+12+12 9+12+12+24 9+9+18+24	9+9+9+12+12 12+12+12+12+12

(Must always have installed a minimum of 2 Indoor Units)

# ALEGRIA PLATINUM SERIES

## MIX & MATCH FLEXIBILITY



**DUAL ZONE**  
CM2-18-2Z



**TRI ZONE**  
CM3-27-3Z



**QUAD ZONE**  
CM4-48-4Z



**FIVE ZONE**  
CM5-54-5Z

**FLEXIBILITY TO MIX & MATCH INDOOR UNITS**  
UP TO 5 ZONES DEPENDING ON YOUR NEEDS

### HIGH WALL MOUNTS



**CPP009CD(I)**



**CPP012CD(I)**

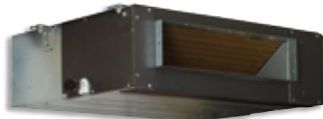


**CPP018CD(I)**

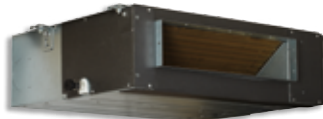


**CPP024CD(I)**

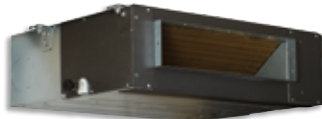
### FAN COILS



**CPA-09**



**CPA-12**



**CPA-18**



**CPA-24**

### FLOOR CEILINGS



**FPA-18**



**FPA-24**

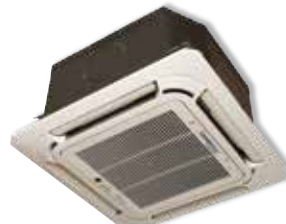
### CASSETTE TYPES



**TPA-09**



**TPA-12**



**TPA-18**



**TPA-24**



# ComfortStar®

## COMFORTSTAR® DUCTLESS FLEX-MOUNT MULTI-ZONE HEAT PUMP SYSTEMS SPECS AT-A-GLANCE

COMFORTSTAR MODEL NO.			MIN. POWER SUPPLY WIRE SIZE (AWG)	MIN. INTER-CONNECTING WIRE SIZE (AWG)	BREAKER SIZE (A)	PIPING SIZES (IN)	MAX. ALLOWABLE PIPING LENGTH (FT)	MIN. RECOMMENDED PIPING LENGTH (FT)	MAX. ALLOWABLE ELEVATION DIFFERENCE (FT)
CM2-18-2Z	2 ZONE	18K	14	16	20	(1/4"/3/8")*2	66 for 1 IDU 98 for sum up	9	1) 33 for ODU higher than IDU 2) 49 for ODU lower than IDU 3) 33 between IDU and IDU
CM3-24-3Z	3 ZONE	27k	14	16	25	(1/4"/3/8")*3	82 for 1 IDU for sum up	9	
CM4-36-4Z	4 ZONE	36k	10	16	40	3x (1/4"/3/8") & 1 x (1/4"/1/2")	98 for 1 IDU 197 for sum up	9	
CM5-48-5Z	5 ZONE	45k	8	16	50	3x (1/4"/3/8") & 2 x (1/4"/1/2")	98 for 1 IDU 246 for sum up	9	

ODU: Outdoor Unit. /// IDU: Indoor Unit.

COMFORTSTAR MODEL NO.	MIN. POWER SUPPLY WIRE SIZE (AWG)	MIN. INTER-CONNECTING WIRE SIZE (AWG)	BREAKER SIZE (A)	PIPING SIZES (IN)	MAX. ALLOWABLE PIPING LENGTH (FT)	MIN. RECOMMENDED PIPING LENGTH (FT)	MAX. ALLOWABLE ELEVATION DIFFERENCE (FT)
<b>ALEGRIA PLATINUM - 21 SEER HEAT PUMP SINGLE-ZONE WALL-MOUNTED/LIGHT COMMERCIAL</b>							
CPP009CA	12*3	16*4, Str	15	1/4" 3/8"	82	12	33
CPP012CA	12*3	16*4, Str	15	1/4" 1/2"	82	12	33
CPP009CD	12*3	16*4, Str	15	1/4" 3/8"	82	12	33
CPP012CD	12*3	16*4, Str	15	1/4" 1/2"	82	12	33
CPP018CD	12*3	16*4, Str	20	1/4" 1/2"	98	12	66
CPP024CD	12*3	16*4, Str	25	3/8" 5/8"	98	12	66
<b>ALEGRIA - 15~16 SEER LIGHT COMMERCIAL INDOOR UNITS (SINGLE ZONE AND MULTI-ZONE)</b>							
<b>FLOOR-CEILING (UNIVERSAL)</b>							
FPA-18	N/A	16*4	N/A	1/4"/1/2"	98	12	66
FPA-24	N/A	16*4	N/A	3/8"/5/8"	98	12	66
<b>CASSETTE</b>							
TPA-12	N/A	16*4	N/A	1/4"/1/2"	82	12	33
TPA-18	N/A	16*4	N/A	1/4"/1/2"	98	12	66
TPA-24	N/A	16*4	N/A	3/8"/5/8"	98	12	66
<b>CONCEALED FAN COIL</b>							
CPA-12	N/A	16*4	N/A	1/4"/1/2"	82	12	33
CPA-18	N/A	16*4	N/A	1/4"/1/2"	98	12	66





**ComfortStar®**

**COMFORTSTAR® DUCTLESS FLEX-MOUNT MULTI-ZONE HEAT PUMP SYSTEMS SPECS AT-A-GLANCE**

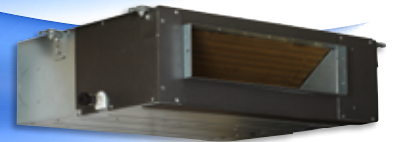
COMFORTSTAR MODEL NO.			FACTORY REFRIGERANT CHARGE (FT)	REFRIGERANT ADJUSTMENT FACTOR (OZ. PER FOOT)	DRAIN PIPE SIZE (IN)	SEER	EER	HSPF
CM2-18-2Z	2 ZONE	18K	25	0.16	3/4"	21.3	12.5	9.9
CM3-24-3Z	3 ZONE	27k	25	0.16	3/4"	22.0	12.0	9.8
CM4-36-4Z	4 ZONE	36k	25	0.16	3/4"	22.5	10.9	10.3
CM5-48-5Z	5 ZONE	45k	25	0.16	3/4"	20.0	12.5	10.0

COMFORTSTAR MODEL NO.	FACTORY REFRIGERANT CHARGE FT/OZ	REFRIGERANT ADJUSTMENT FACTOR (OZ. PER FOOT)	DRAIN PIPE SIZE (IN)	SEER	EER	HSPF
<b>ALEGRIA PLATINUM - 21 SEER HEAT PUMP SINGLE-ZONE WALL-MOUNTED/LIGHT COMMERCIAL</b>						
CPP009CA	25	0.161	3/4"	22.5	13.5	9.8
CPP012CA	25	0.161	3/4"	21.5	12.5	8.4
CPP009CD	25	0.161	3/4"	20	13	9.8
CPP012CD	25	0.161	3/4"	21.5	14	8.4
CPP018CD	25	0.161	3/4"	20	12.5	9.6
CPP024CD	25	0.322	3/4"	20	12.5	9.6
<b>ALEGRIA - 15~16 SEER LIGHT COMMERCIAL INDOOR UNITS (SINGLE ZONE AND MULTI-ZONE)</b>						
<b>FLOOR-CEILING (UNIVERSAL)</b>						
FPA-18	N/A	N/A	3/4"	22	14	10.5
FPA-24	N/A	N/A	3/4"	19	10	10.5
<b>CASSETTE</b>						
TPA-12	N/A	N/A	3/4"	20.5	13	10
TPA-18	N/A	N/A	3/4"	19	12.5	9
TPA-24	N/A	N/A	1"	17.5	10.3	10.5
<b>CONCEALED FAN COIL</b>						
CPA-12	N/A	N/A	3/4"	18	12.5	10
CPA-18	N/A	N/A	3/4"	18.5	12.5	9.6



# FLEX-MOUNT MULTI-ZONE SYSTEMS

WITH INVERTER TECHNOLOGY



# ComfortStar®

12201 N.W. 107TH AVENUE • MEDLEY, FL 33178

**TOLL FREE: 1-866-524-9898**

**PHONE: 1-305-500-9898 • FAX: 305-500-9896**

**E-MAIL: [info@comfortstarusa.com](mailto:info@comfortstarusa.com)**

**WEB: [www.comfortstarusa.com](http://www.comfortstarusa.com)**

**ALEGRIA**  
**PLATINUM**   
SERIES

All rights reserved. Printed in the United States of America. This publication is protected by Copyright and permission must be obtained by eAir, LLC prior to any reproduction or transmission in any form or by any means, electronic, mechanical, photocopying, recording or likewise.

We are Proud Sponsors of  
**Casa  Amor**  
*Mending Hearts, One Child at a Time*  
[www.casaamorvillages.org](http://www.casaamorvillages.org)

**2016**  
**MULTI-ZONE PRODUCT CATALOG**  
**PART# CSTAR-MULTIZONE-888-01-2016**