

Project Name: \_\_\_\_\_  
 Location: \_\_\_\_\_  
 Engineer: \_\_\_\_\_  
 Submitted to: \_\_\_\_\_  
 Submitted by: \_\_\_\_\_  
 Reference: \_\_\_\_\_

Approval: \_\_\_\_\_  
 Date: \_\_\_\_\_  
 Construction: \_\_\_\_\_  
 Unit #: \_\_\_\_\_  
 Drawing #: \_\_\_\_\_

### Performance

*Outdoor Unit Model No:* RXYQ72PBYD  
*Type:* Non-Ducted / Ducted  
*Rated Cooling Capacity (Btu/hr):* 69000  
*Nom Cooling Capacity (Btu/hr):* 72000  
*Cooling Input Power (kW):* 5.39  
*SEER:* N/A  
*IEER:* 25.8/21.5  
*Rated Heating Capacity (Btu/hr):* 77000  
*Nom Heating Capacity (Btu/hr):* 81000  
*Heating Input Power (kW):* 6.08  
*Heating COP (Btu/hr / Btu/hr):* 4.0/3.71  
*HSPF:* N/A  
*Heating COP 17F (Btu/hr / Btu/hr):* 2.65/2.4

*Condensing Unit Type:* 6-Ton VRV-III Heat Pump  
*Unit Combination:* RXYQ72PBYD  
*Rated Cooling Conditions* Indoor: 80°F DB/67°F WB  
 Outdoor: 95°F DB/75°F WB  
*Rated Heating Conditions* Indoor: 70°F DB/60°F WB  
 Outdoor: 47°F DB/43°F WB  
*Rated Piping Length (ft)* 50 / 25  
*Rated Height Difference (ft)* 0

### Condensing Unit Details

*Power Supply (V/Hz/Ph):* 460/60/3ph  
*Power Supply Connections:* L1, L2, L3 Ground  
*Min. Circuit Amps MCA (A):* 16  
*Max. Overcurrent Protection (MOP)(A):* 20  
*Max. Starting Current MSC(A):* -  
*Rated Load Amps RLA (A):* 7.1  
*Dimensions Height (Inch):* 66-1/8  
*Dimensions Width (Inch):* 36-5/8  
*Dimensions Depth (Inch):* 30-1/8  
*Net Weight (lbs):* 433

*Compressor Type:* Inverter  
*Capacity Control Range (%):* 20 - 100  
*Capacity Index Limit:* 36 - 93.6 (130%)  
*Airflow Rate (CFM):* 6530  
*Gas Pipe Connection (inch):* 3/4  
*Liquid Pipe Connection (inch):* 3/8  
*H/L Pressure Connection (inch):* \_\_\_\_\_  
*H/L Equalizing Connection (inch):* \_\_\_\_\_  
*Sound Pressure Level (dBA):* 57  
*Sound Power Level (dBA):* \_\_\_\_\_  
*Max. No. of Indoor Units:* 12

### System Details

*Refrigerant Type:* R-410A  
*Holding Refrigerant Charge (lbs):* 16.5  
*Additional Charge (lbs/ft):* install data  
*Pre-charge Piping (Length ft):* -  
*Max. Pipe Length (Total ft):* \_\_\_\_\_  
*Max. Pipe Length (Vertical ft):* 164 ft (295 ft) / 295 ft  
*Max Height Separation (Ind to Ind ft):* \_\_\_\_\_

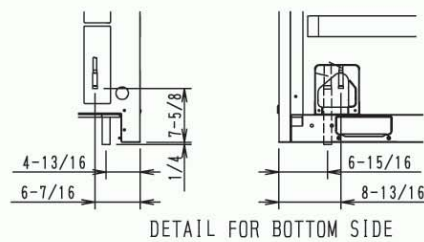
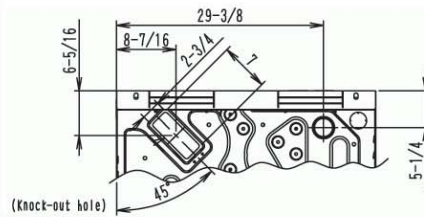
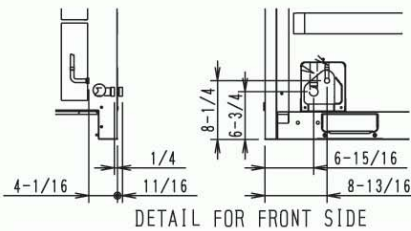
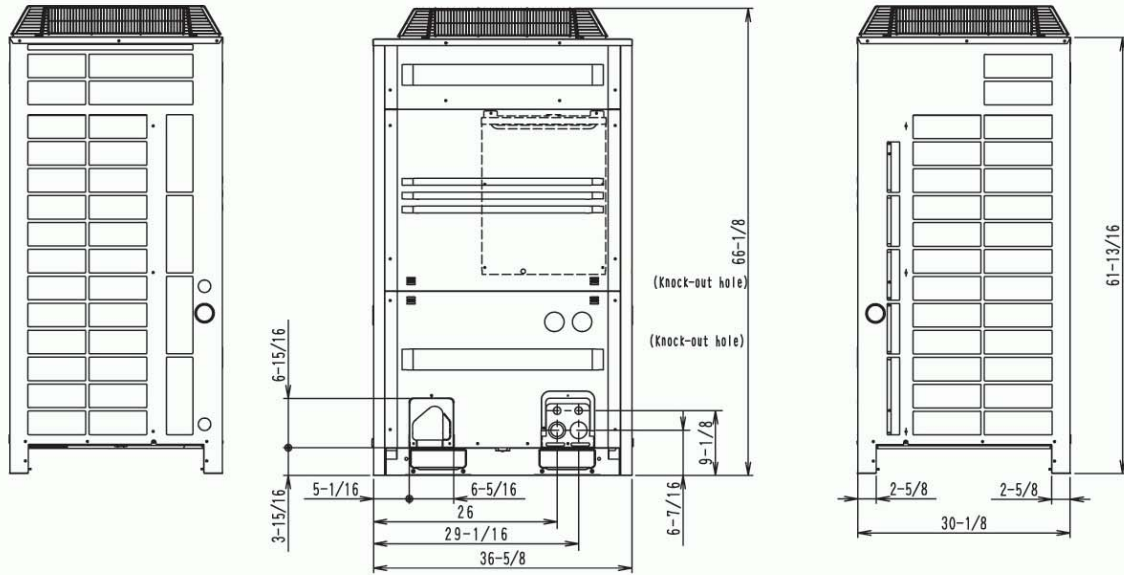
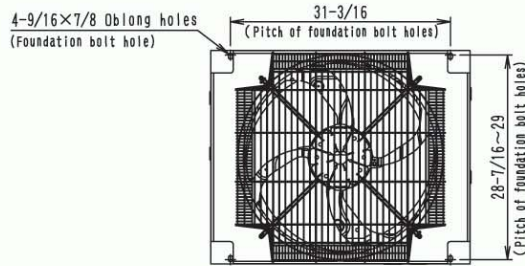
*Cooling Operation Range (°F):* 23 - 110  
*Cooling Range w/Baffle (°F):* \_\_\_\_\_  
*Heating Operation Range (°F):* 0 - 77 / (-4) - 60  
*Heating Range w/Baffle (°F):* \_\_\_\_\_

Project Name: \_\_\_\_\_  
 Location: \_\_\_\_\_  
 Engineer: \_\_\_\_\_  
 Submitted to: \_\_\_\_\_  
 Submitted by: \_\_\_\_\_  
 Reference: \_\_\_\_\_

Approval: \_\_\_\_\_  
 Date: \_\_\_\_\_  
 Construction: \_\_\_\_\_  
 Unit #: \_\_\_\_\_  
 Drawing #: \_\_\_\_\_

## Dimensional Drawing - Condensing Unit

RXYQ72PBYD



Project Name: \_\_\_\_\_  
Location: \_\_\_\_\_  
Engineer: \_\_\_\_\_  
Submitted to: \_\_\_\_\_  
Submitted by: \_\_\_\_\_  
Reference: \_\_\_\_\_

Approval: \_\_\_\_\_  
Date: \_\_\_\_\_  
Construction: \_\_\_\_\_  
Unit #: \_\_\_\_\_  
Drawing #: \_\_\_\_\_

**RXYQ72PBYD**



**RXYQ72PBYD**

Std U.S. Warranty: 7yrs Compressor, 1yrs Parts